



images

Photography by
Malcolm Turner

Pittsburg State University



Bicknell Family

Center for the Arts

1711 S. Homer • Pittsburg, Kansas

This exhibit was made possible with the support of Miller's Professional Imaging/MPix.



Malcolm Turner

Malcolm Turner has seemingly always seen the world through the lens of a camera. As a child, he would sit with his father – also a photographer and owner of a local advertising company – as the elder Turner would thumb through the newspaper, describe how the images were created, and then critique their composition.

Turner's life as a photographer began during his years at St. Mary's-Colgan High School where he shot for the yearbook and as a Friday night stringer for the Pittsburg Headlight Sun. He attended Pittsburg State for two years before transferring to the University of Kansas to earn a photojournalism degree.

After spending a few years at The Chanute Tribune and in multimedia in Dallas, Texas, Turner returned to his alma mater in 1986 and began a career that would span 30 years.

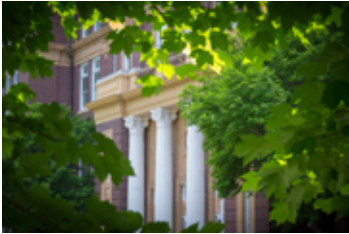
During his time at Pittsburg State, Turner's images chronicled the institution's rise from a local university to an international academic destination. He has worked with world leaders, including former President Bill Clinton and former First Lady Laura Bush, industrial leaders such as former Walmart CEO, H. Lee Scott and athletic legends like NFL Hall of Fame member Bobby Bell.

But he is best known for his ability to capture the emotion, beauty and spirit of everyday life. The images included in this exhibit represent a small slice of his time spent at Pittsburg State University. Turner has skillfully captured the optimism and determined spirit of the collegiate experience.

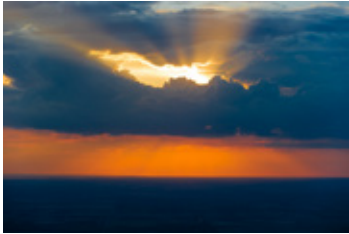
You can't help but be moved by the frenetic energy of a Gorilla game day, the gentle beauty of a winter's morning and the unbridled joy of a graduate's accomplishments.

These are the emotions our students experience every day, lovingly captured by a master photographer.

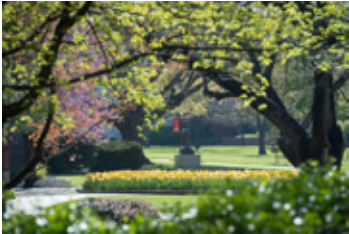
These are images by Malcolm Turner.



September 2014, Russ Hall



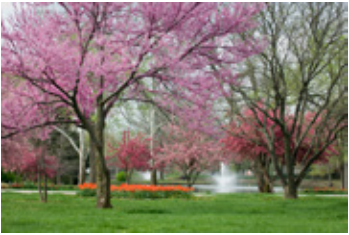
September 2011, Sunset Storm



June 2011, Spring on the Oval



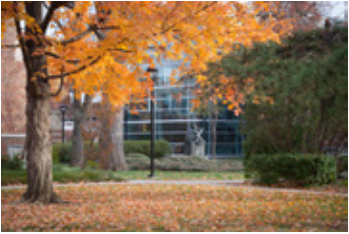
November 2010, Triple Reflection



March 2007, University Lake



Fall 2010, Fall Walk at University Lake



November 2010, Fall on the Oval



December 2010, Winter's Silence



October 2015,
PSU Yell Leaders



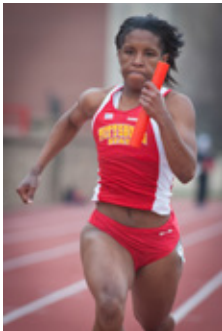
September 2007,
Gorilla Village



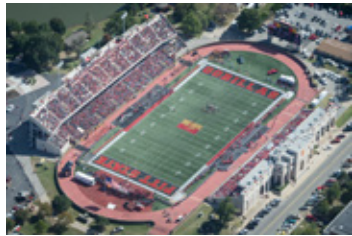
September 2010,
PSU Dance Team



November 2004, Game Day



March 2007,
PSU Track



October 2015, Homecoming-
Carnie Smith Stadium



October 2012,
Carnie Smith Stadium



October 2009, Just Beat It



September 2014,
Gorilla Village



November 2003, Fans



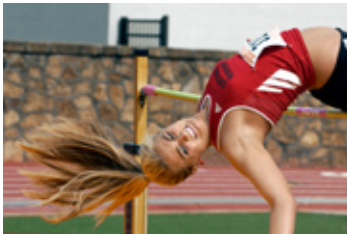
September 2005, Crimson & Gold



October 2014, Football Frenzy



December 2004, Jack Overman



May 2005, One More Inch



May 2005, Pinamonti Triplets



October 2004, PSU Volleyball



June 2010,
Alumni
Gorilla
Gathering-
Kansas City



September 2004,
Center Oval
Shadow



May 2008,
Rainy Days



February 2006, Tuba Player



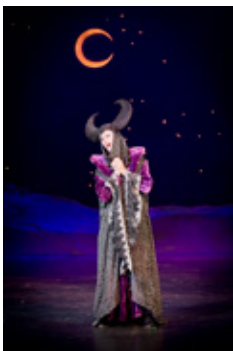
May 2015, Friends Since Childhood



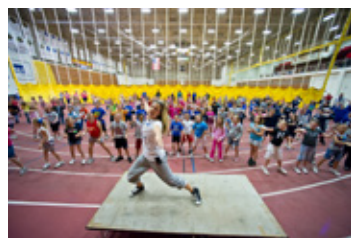
June 2002, Narcissus



May 2010,
Commencement



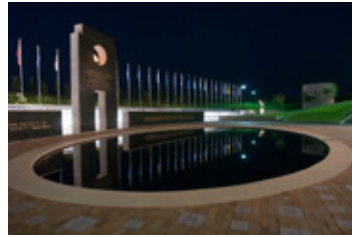
November 2011,
Opera



May 2011, Exercising



October 2012, Yell Like Hell



July 2006, PSU Veterans Memorial



October 2010, Laser Etching Names of the Fallen

All photographic images within the Bicknell Family Center for the Arts gallery space were produced by Miller's/MPIX.

west wall

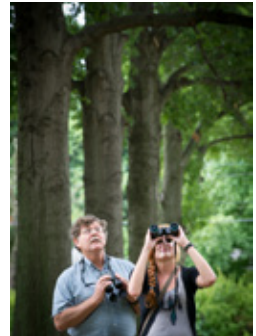
images



May 2014, Kansas Kids Fitness



April 2013, Kansas Technology Center



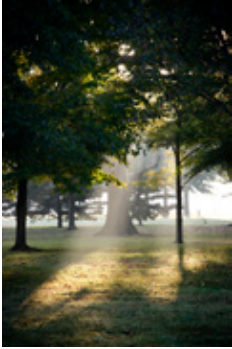
July 2011, Biology Field Trip



August 2014, Nation Hall Check-in

west wall continued

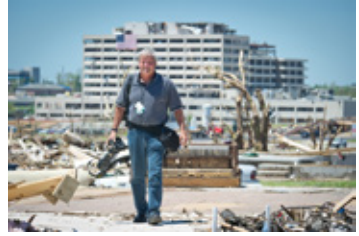
west wall images *continued*



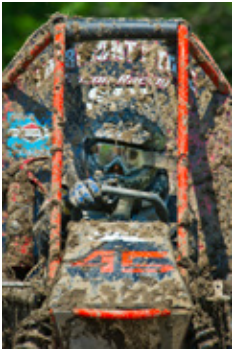
October 2010,
Morning Sun



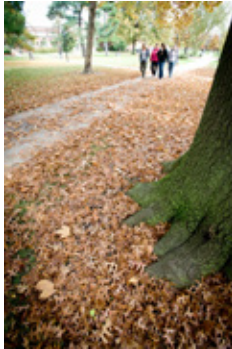
August 2014,
Champions Plaza



June 2011 Joplin Tornado



May 2011, Baja



October 2009, Fall on
the Oval



May 2008, Macaw, PSU Nature Reach



February 2012, RGB Men with Student



November 2009, Diwali Festival



July 2008, Drum and Bugle Performance



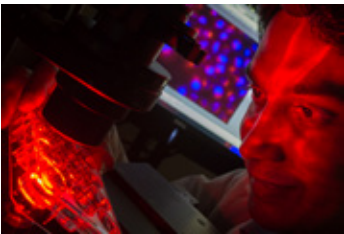
October 2015, Charlotte's Web



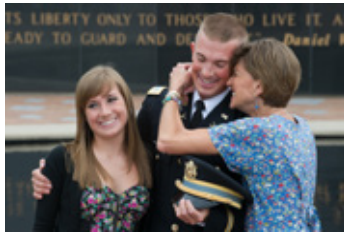
September 2009, Presidents Society



May 2012, Commencement



July 2014, Nano Medicine



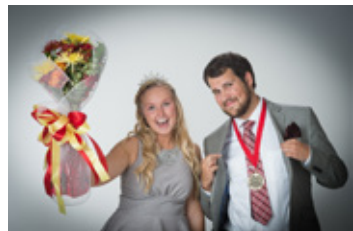
May 2011, ROTC Commissioning



October 2011, Sunrise to Class



May 2012, Commencement



October 2014, Homecoming King & Queen

exterior facing wall

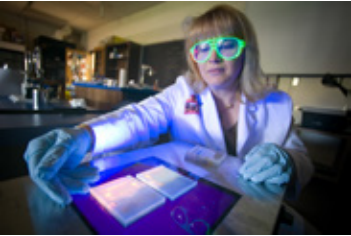
images



May 2003, USA Flag



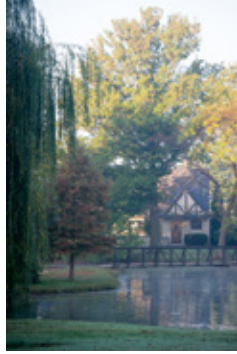
April 2008, Painter's Palette



April 2008, Genetics Lab



November 2015, Campus Connections



October 2010, Timmons Chapel



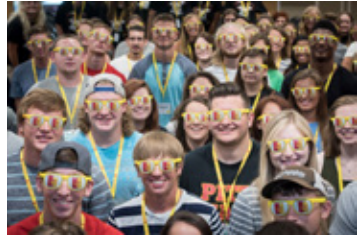
March 2015, SEK Symphony



November 2009, ROTC Leadership



October 2014,
Bicknell Family
Center for the
Arts



June 2016, Freshman Orientation

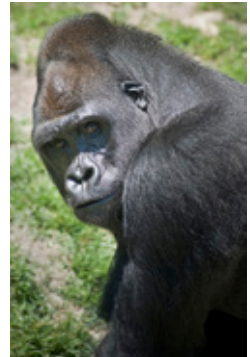


November 2011, First Snowfall

late additions to the exhibit _____



April 2002,
Night Song
(north wall)



June 2008,
Sedgwick County Zoo
(Wichita) Gorilla
(west wall)



October 2012,
Yell Like Hell
(south wall)

Pittsburg State University
and the Bicknell Family Center for the Arts thank
Miller's Professional Imaging/MPIX
for making this exhibit possible.



All photographic images within the Bicknell Center gallery space
were produced by Miller's/MPIX.

The four largest prints are done on Miller's "modern metals" -
1/16" aluminum sheets that come mounted with a metal easel or float mount.
The remaining prints (sizes ranging from from 16x20", 20x20" to 20x30")
are printed on E-surface photographic paper and mounted to a Standout
(1.5" foam board with finished sides that come in black or white).

REPRINTS OF IMAGES PRESENTED WITHIN THIS EXHIBIT MAY BE ORDERED ONLINE.

To learn more about prices, size options and to view the
"Images by Malcolm Turner" offered for reprints, visit the following link
on the Bicknell Center webpage: bicknellcenter.com/photostore.

The actual prints on display in the Bicknell Center gallery space will
be made available to the public later this academic year, once
the exhibit ends. Proceeds from the sale of these prints will go towards
a PSU scholarship in Malcolm Turner's honor. If you would like to receive
the announcement regarding the sale/auction of these exhibit prints,
please sign the exhibit guest book and provide an email address.

Some images in the exhibit may not be included in this brochure.
Visit the Bicknell Center photo store online for a complete listing.

The banner in the exterior west window was produced by
Pittcraft Printing of Pittsburg.

*Thank you for visiting the
"Images by Malcolm Turner" exhibit in the Bicknell Center.*